

番号 W-1

名古屋帯 (綿)

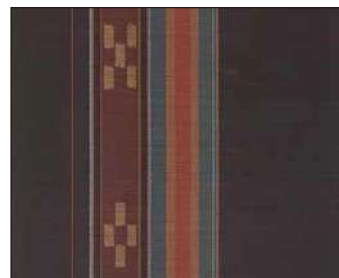
サイズ : 31 × 500 cm



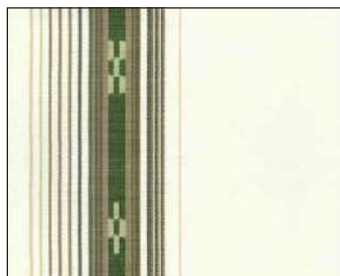
WO8/1136 (ハーリーブルー)



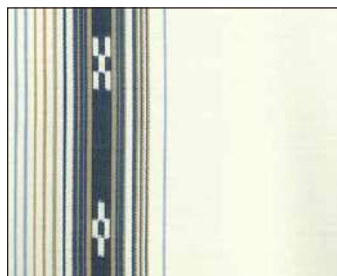
WO8/1137 (ハーリーグリーン)



WO8/1156 (変わり棒織・ムリブシ)



WO8/1144 (ヤタラ白グリーン)



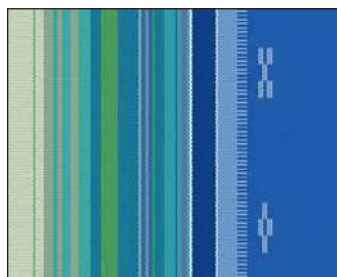
WO8/1145 (ヤタラ白紺)



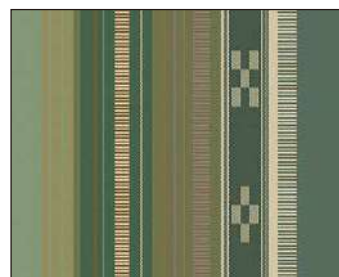
WO8/502 (うりづん黒)



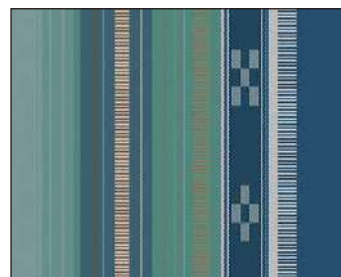
WO8/1171 (スサナツグリーン)



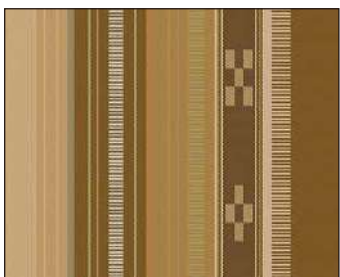
WO8/1172 (ニライカナイ)



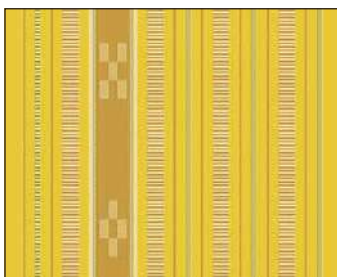
WO8/2316 (3色ヤッサミ・緑)



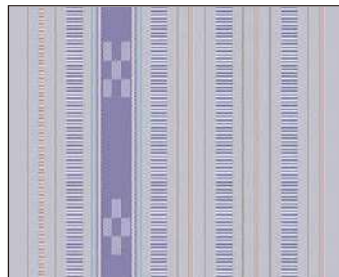
WO8/2317 (3色ヤッサミ・紺)



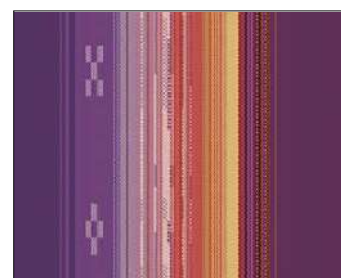
WO8/2318 (3色ヤッサミ・茶)



WO8/2414 (ヤッサミ筋・黄)



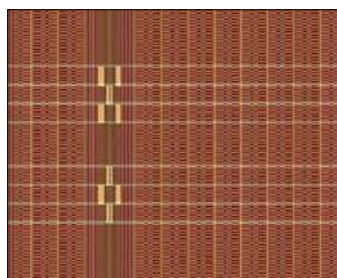
WO8/2415 (ヤッサミ筋・グレー)



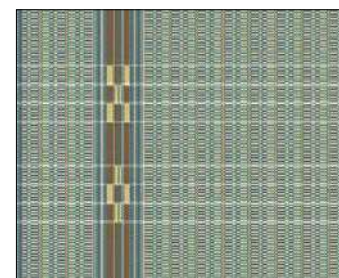
WO8/2507 (太陽綾)



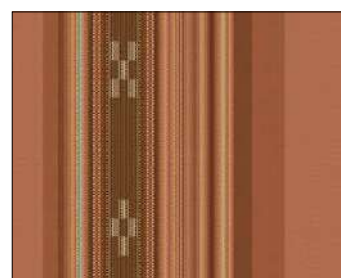
WO8/2509 (跳びヤッサミ・ひわねず)



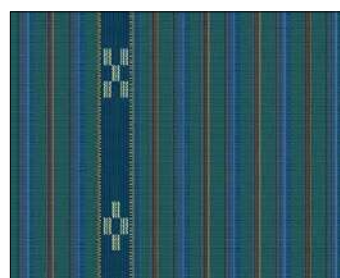
WO8/2510 (人參花・深緋:こきり)



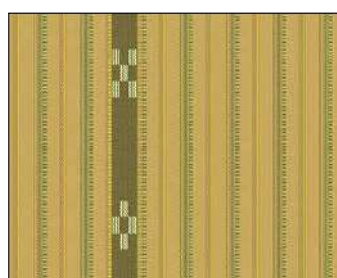
WO8/2511 (薄千草:うすちくさ)



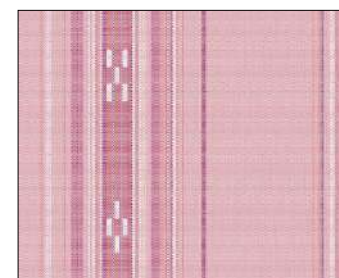
WO8/2513 (グラデーション・オレンジ)



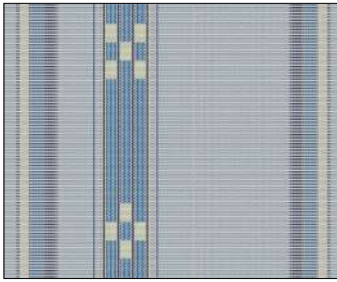
WO8/2801 (イノー)



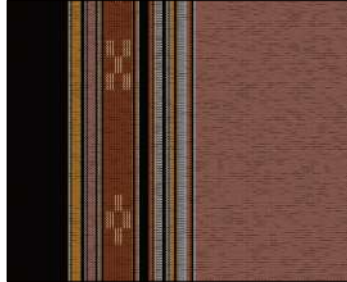
WO8/2802 (クガニ)



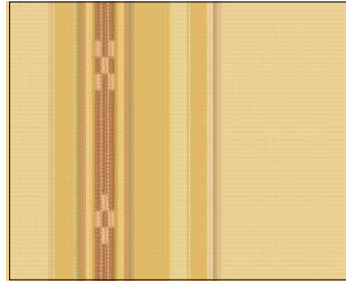
WO8/H2904 (桃花色)



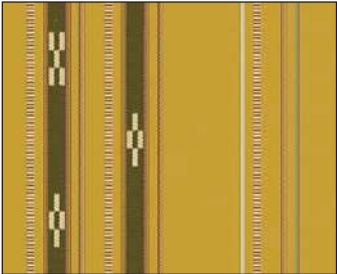
W08/H3007 (総ヤッサミブルー)



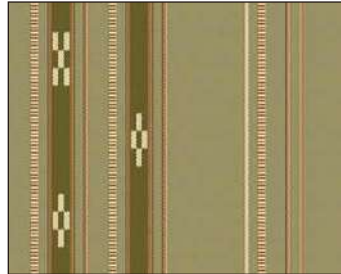
W08_H3003 (黒海老茶)



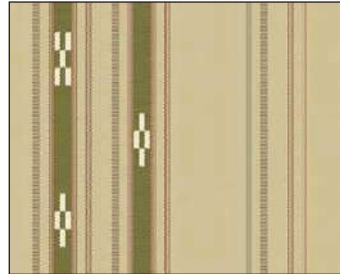
W08/H3006 (くちなし色)



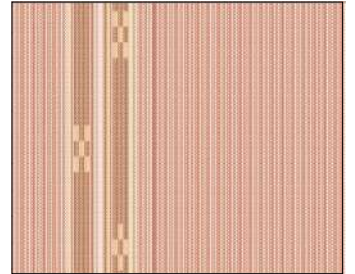
W08/527 (2本緋・金茶)



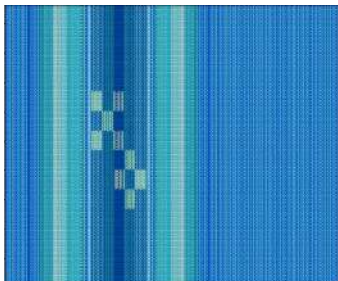
W08/529 (2本緋・黄緑)



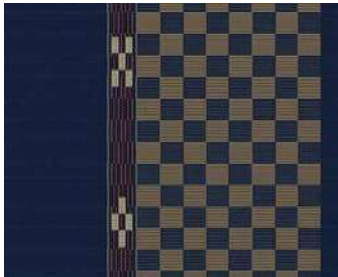
W08/530 (2本緋・ベージュ)



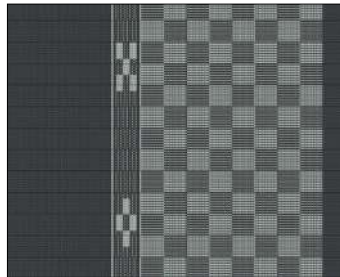
W08/H3005 (コーラルピンク)



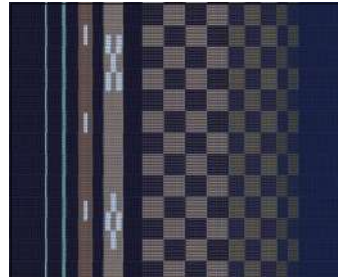
W08/H2905 (重ね緋・青)



W08-10/IHG (藍ヒチガーラ)



W08-10/GHG (グレーヒチガーラ)



W08/H3001 (ぼかしヒチガーラ)

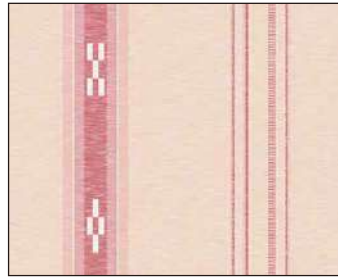


W08_310 (海) ※価格についてはご相談ください

番号 W-2

名古屋帯（絹）

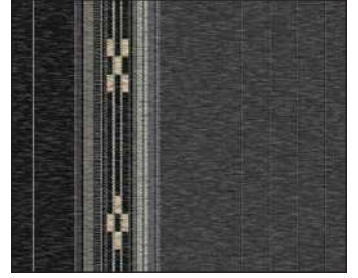
サイズ：31×510 cm



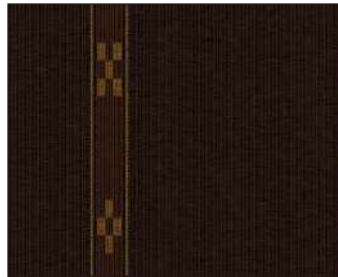
WO8-S/2206 (うすピンク)



WO8-S/2208 (ヤッサミグレー茶)



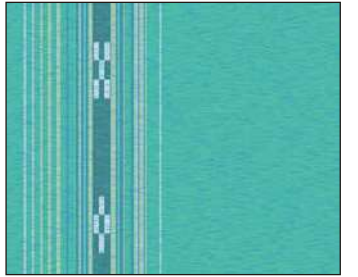
WO8-S/2209 (黒グレー)



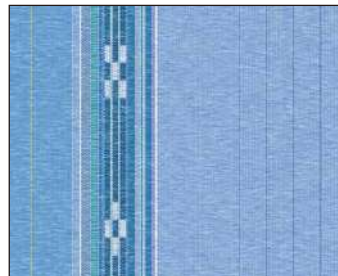
WO8-S/2210 (黒檀)



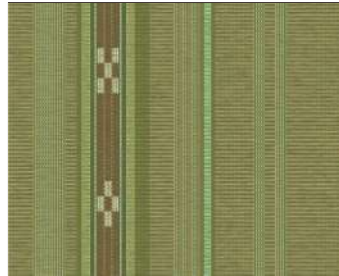
WO8-S/2301 (クロトン)



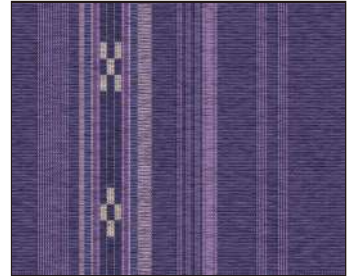
WO8-S/2302 (グリーン)



WO8-S/2303 (ムーディー青)



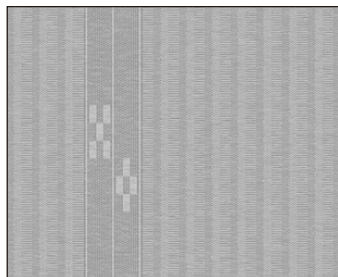
WO8-S/H2906(太縞ヤッサミ・モスグリーン)



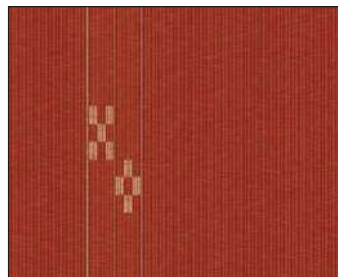
WO8-S/H2907(太縞ヤッサミ・紫)



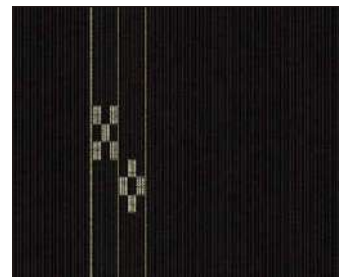
WO8-S/H3004 (黒海老茶)



WO8-S/2207 (ずらし縞・ヤッサミ白グレー)



WO8-S/2304 (ずらし縞・赤)



WO8-S/2211 (ずらし縞・黒)



WO8-S/H3008 (スジ縞/黄緑)※重ね縞