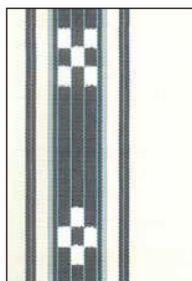


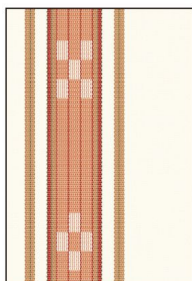
番号 W-3

半巾帯

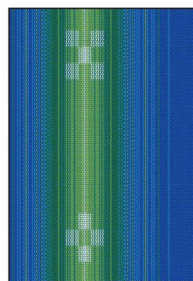
サイズ：15×360 cm



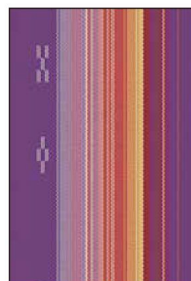
WO4/1002
(白地の紺)



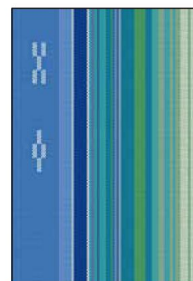
WO4/H2901
(白地薄紅)



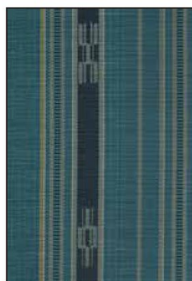
WO4/2804
(美らさんご)



WO4/2506
(太陽綾)



WO4/2416
(ニライカナイ)



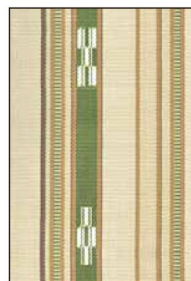
WO4/200
(ハーリーブルー)



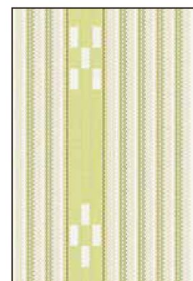
WO4/201
(ハーリーグリーン)



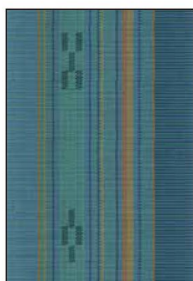
WO4/208
(ハーリーピンク)



WO4/210
(ハーリーベージュ)



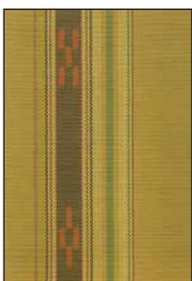
WO4/2201
(スサナツグリーン)



WO4/1230
(リーフ)



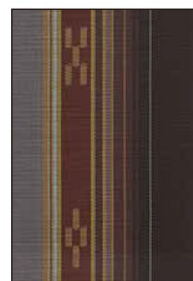
WO4/177
(赤茶グリーン)



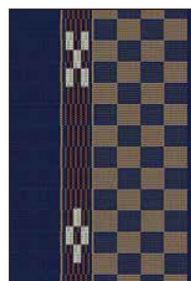
WO4/1031
(クロトン)



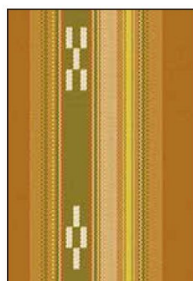
WO4/1210
(イラカ)



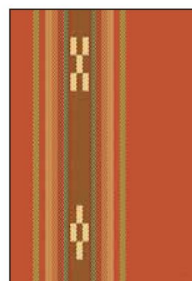
WO4/2205
(うりづん黒)



WO4/2203
(藍ヒチガーラ)



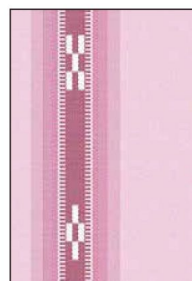
WO4/2204
(ほかし筋茶)



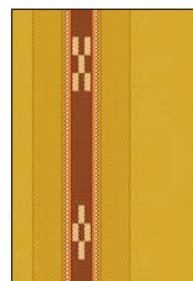
WO4/2409
(茜色)



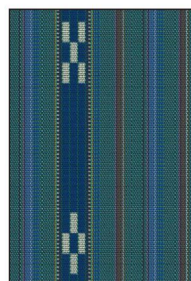
WO4/2410
(花紺)



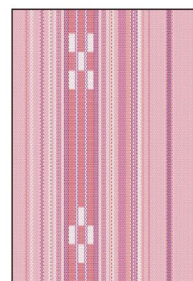
WO4/2202
(桜色)



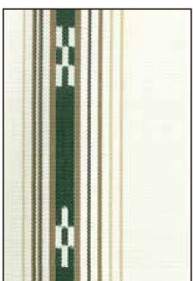
WO4/2412
(深黄)



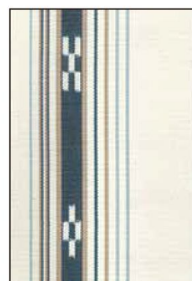
WO4/2803
(イノー)



WO4/H2903
(桃花色)



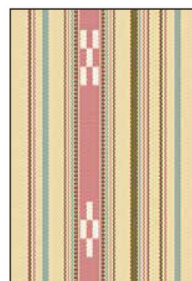
WO4/1008
(ヤタラ白グリーン)



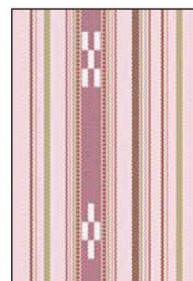
WO4/1009
(ヤタラ白紺)



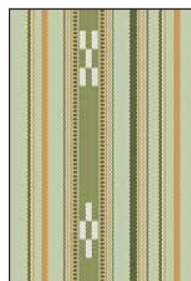
WO4/602
(ヤタラ月桃ムリブシ)



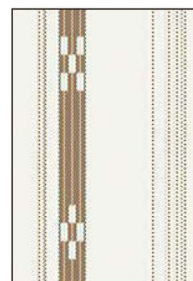
WO4/2305
(ベージュヤタラ縞)



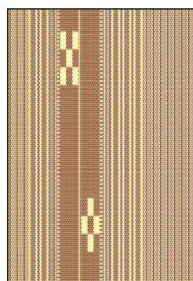
WO4/2307
(紅梅ヤタラ縞)



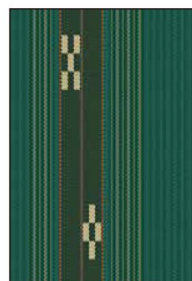
WO4/2306
(薄グリーンヤタラ縞)



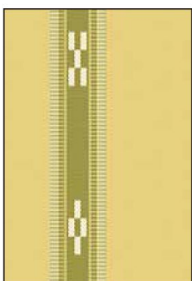
WO4/2411
(白砂浜)



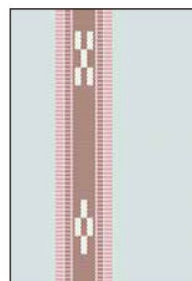
WO4/H2902
(2本拵・丁字茶)



WO4/2514
(2本拵・深青緑)



WO4/2417
(2色ヤッサミベージュ)



WO4/2418
(2色ヤッサミグレー)