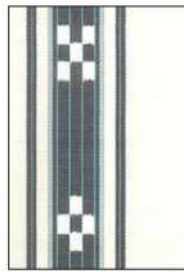


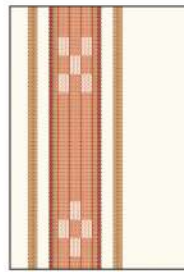
番号 W-3

# 半巾帯

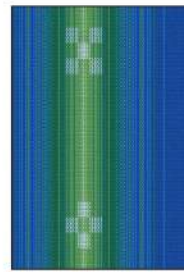
サイズ : 15 × 360 cm



WO4/1002  
(白地の紺)



WO4/H2901  
(白地薄紅)



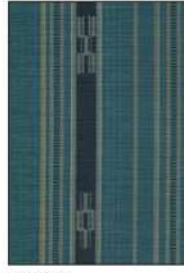
WO4/2804  
(美らさんご)



WO4/2506  
(太陽綾)



WO4/2416  
(ニライカナイ)



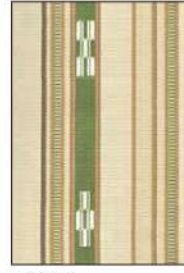
WO4/200  
(ハーリーブルー)



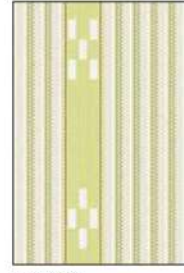
WO4/201  
(ハーリーグリーン)



WO4/208  
(ハーリーピンク)



WO4/210  
(ハーリーベージュ)



WO4/2201  
(スサナツグリーン)



WO4/177  
(赤茶グリーン)



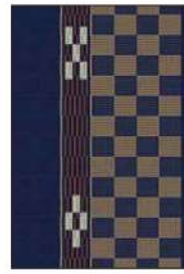
WO4/1031  
(クロトン)



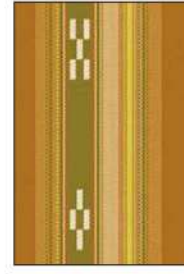
WO4/1210  
(イラカ)



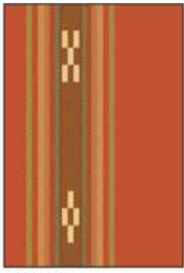
WO4/2205  
(うりぶん黒)



WO4/2203  
(藍ヒチガーラ)



WO4/2204  
(ほかし筋茶)



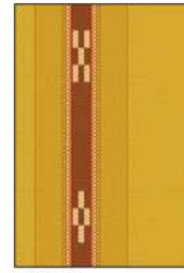
WO4/2409  
(茜色)



WO4/2410  
(花紺)



WO4/2202  
(桜色)



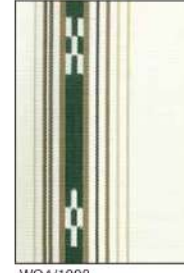
WO4/2412  
(深黄)



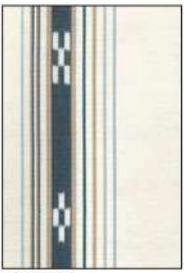
WO4/2803  
(イノ)



WO4/H2903  
(桃花色)



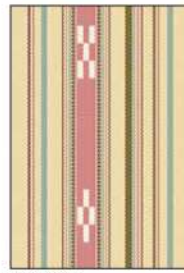
WO4/1008  
(ヤタラ白グリーン)



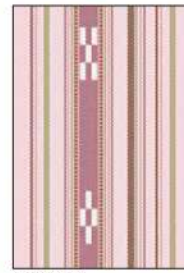
WO4/1009  
(ヤタラ白紺)



WO4/602  
(ヤタラ月桃ムリブシ)



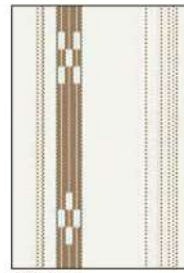
WO4/2305  
(ベージュヤタラ縞)



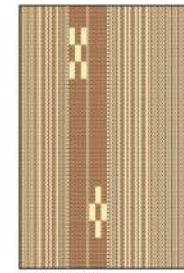
WO4/2307  
(紅梅ヤタラ縞)



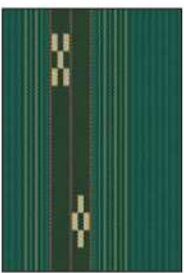
WO4/2306  
(薄グリーンヤタラ縞)



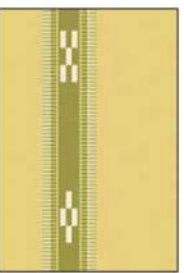
WO4/2411  
(白砂浜)



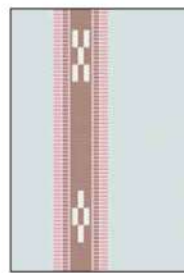
WO4/H2902  
(2本紺・丁字茶)



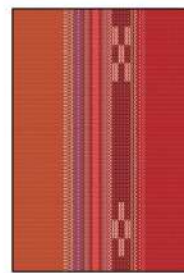
WO4/2514  
(2本紺・深青緑)



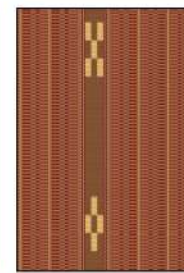
WO4/2417  
(2色ヤッサミベージュ)



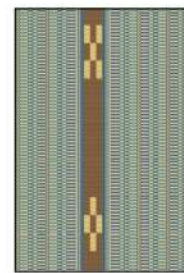
WO4/2418  
(2色ヤッサミグレー)



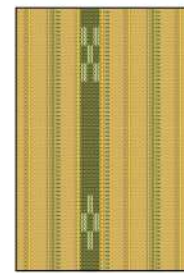
WO4/3001  
(こっかーら)



WO4/3002  
(人參花・深紺)



WO4/3003  
(人參花・薄千草)



WO4/3004  
(クガニ)