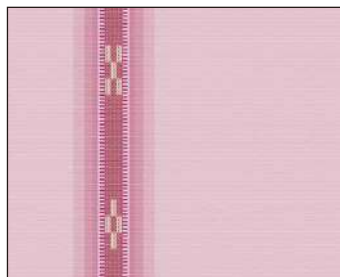


番号 W-1

名古屋帯 (綿)

サイズ : 31 × 500 cm



WO8/092 (桜色スジ)



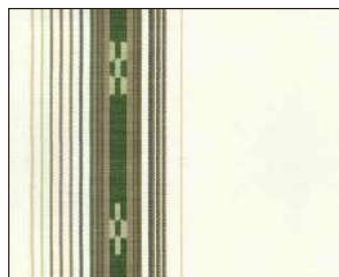
WO8/1136 (ハーリーブルー)



WO8/1137 (ハーリーグリーン)



WO8/1143 (ハーリーピンク)



WO8/1144 (ヤタラ白グリーン)



WO8/1145 (ヤタラ白紺)



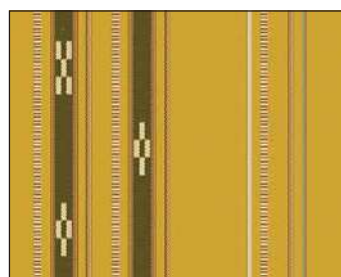
WO8/1156 (変わり棒織・ムリブシ)



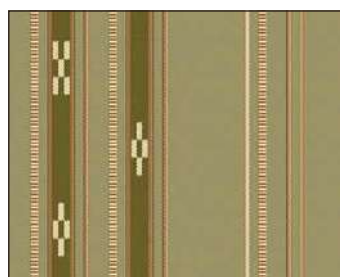
WO8/528 (2本紺・グリーン)



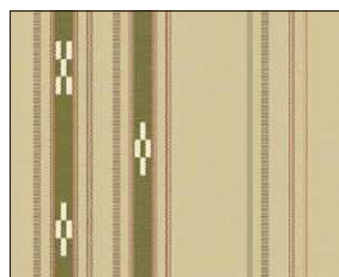
WO8/502 (ウリづん黒)



WO8/527 (2本紺・金茶)



WO8/529 (2本紺・黄緑)



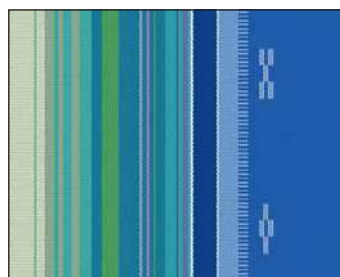
WO8/530 (2本紺・ベージュ)



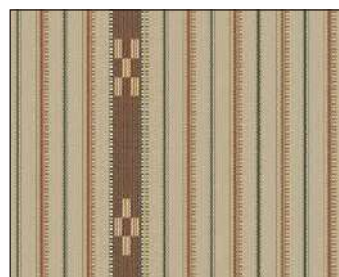
WO8\_310 (海)



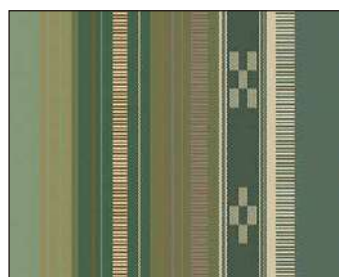
WO8/1171 (スサナツグリーン)



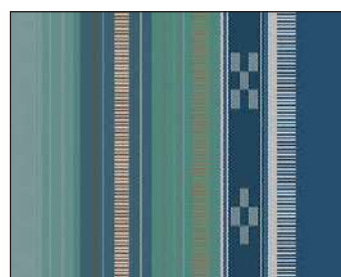
WO8/1172 (ニライカナイ)



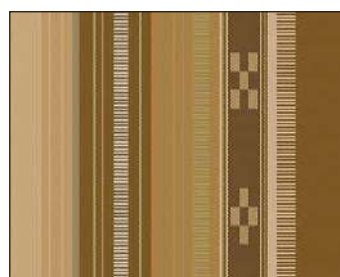
WO8/KO (香色)



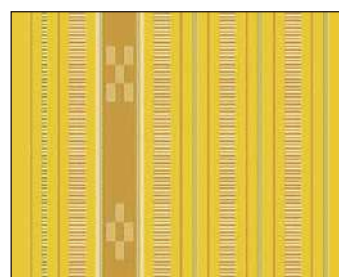
WO8/2316 (3色ヤッサミ・緑)



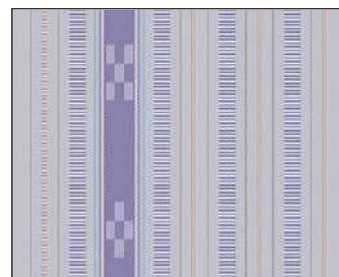
WO8/2317 (3色ヤッサミ・紺)



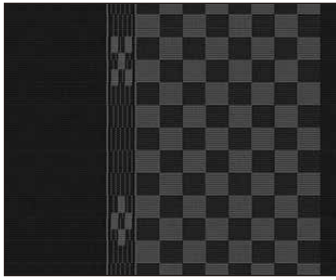
WO8/2318 (3色ヤッサミ・茶)



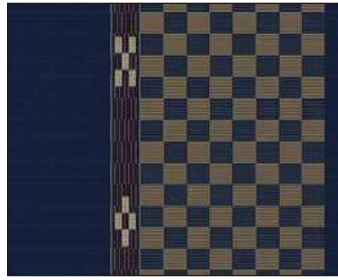
WO8/2414 (ヤッサミ筋・黄)



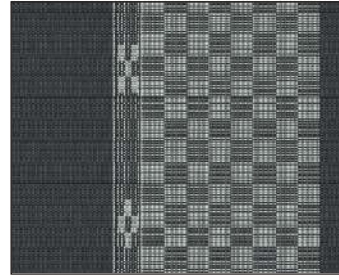
WO8/2415 (ヤッサミ筋・グレー)



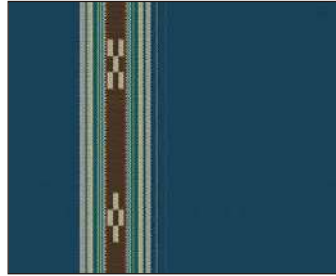
WO8-10/KHG (黒ヒチガーラ)



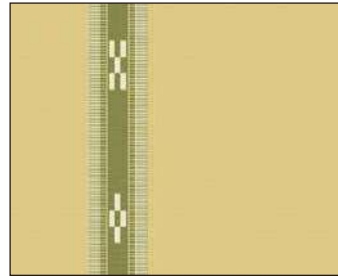
WO8-10/IHG (藍ヒチガーラ)



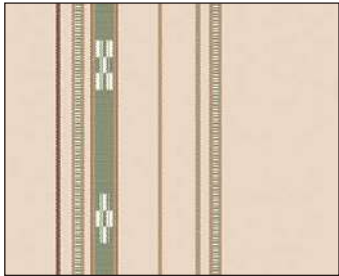
WO8-10/GHG (グレーヒチガーラ)



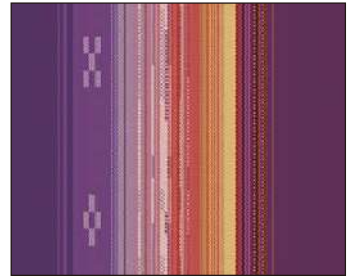
WO8/2501 (花紺)



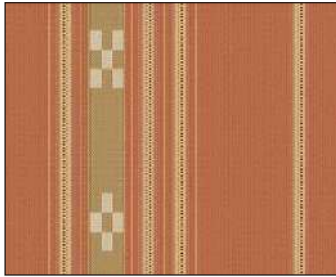
WO8/2502 (2色ヤッサミベージュ)



WO8/2504 (ハーリーベージュ)



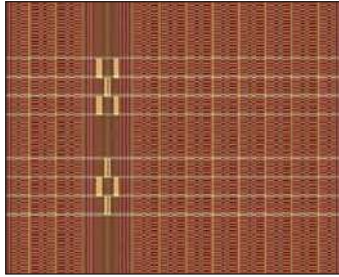
WO8/2507 (太陽綾)



WO8/2508 (跳びヤッサミ・丹色:にいろ)



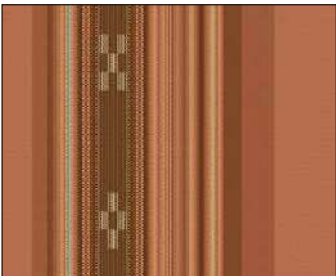
WO8/2509 (跳びヤッサミ・ひわねず)



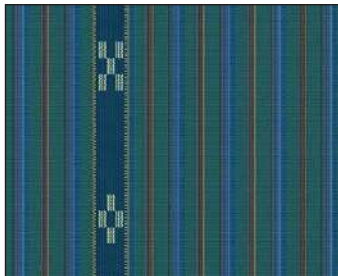
WO8/2510 (人參花・深緋:こきり)



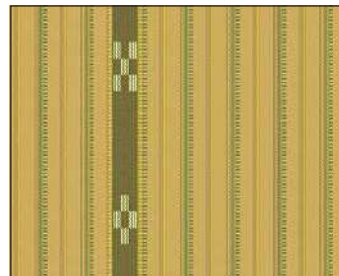
WO8/2511 (薄千草:うすちくさ)



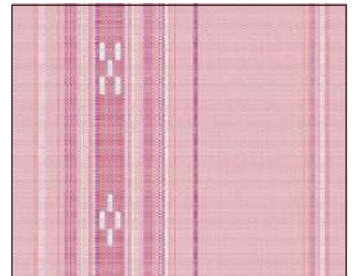
WO8/2513 (グラデーション・オレンジ)



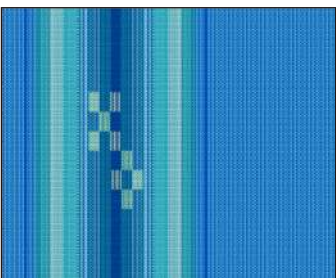
WO8/2801 (イノー)



WO8/2802 (クガニ)



WO8/H2904 (桃花色)

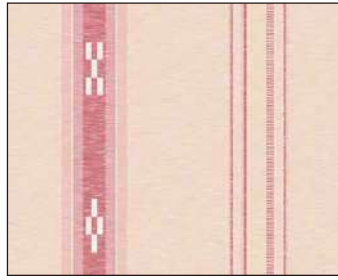


WO8/H2905 (重ね紺・青)

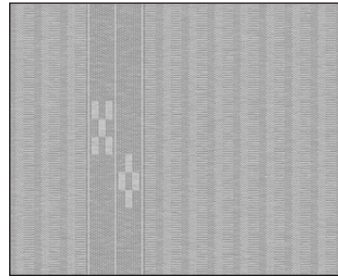
番号 W-2

名古屋帯 (絹)

サイズ : 31 × 510 cm



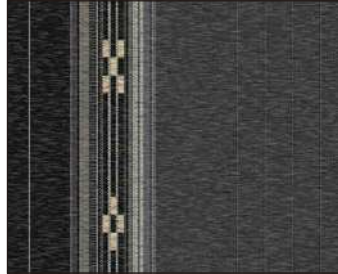
WO8-S/2206 (うすピンク)



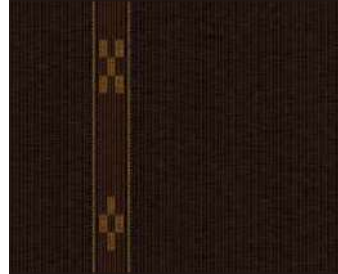
WO8-S/2207 (ずらし縞・ヤッサミ白グレー)



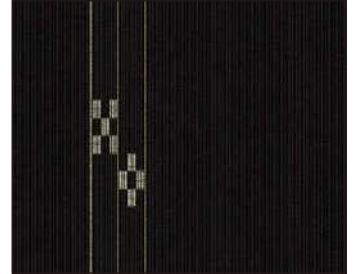
WO8-S/2208 (ヤッサミグレー茶)



WO8-S/2209 (黒グレー)



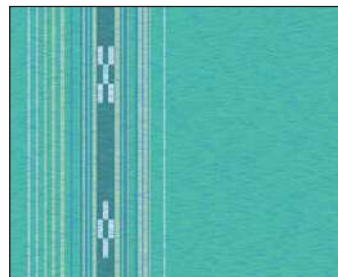
WO8-S/2210 (黒檀)



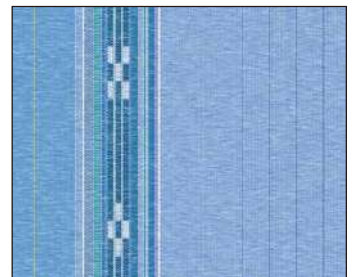
WO8-S/2211 (ずらし縞・黒)



WO8-S/2301 (クロトン)



WO8-S/2302 (グリーン)



WO8-S/2303 (ムーディー青)



WO8-S/2304 (ずらし縞・赤)



WO8-S/H2906(太縞ヤッサミ・モスグリーン)



WO8-S/H2907(太縞ヤッサミ・紫)