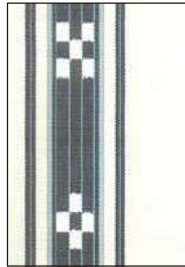


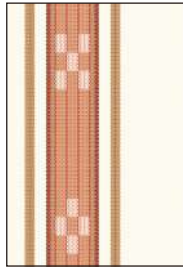
番号 W-3

半巾帯

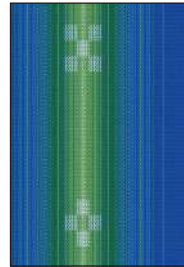
サイズ : 15 × 360 cm



WO4/1002
(白地の紺)



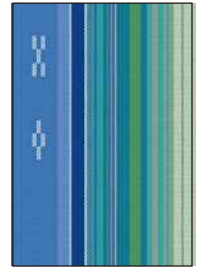
WO4/H 2901
(白地薄紅)



WO4/2804
(美らさんご)



WO4/2506
(太陽綫)



WO4/2416
(ニライカナイ)



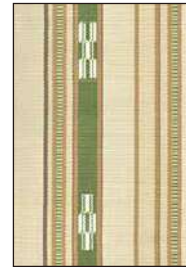
WO4/200
(ハーリーブルー)



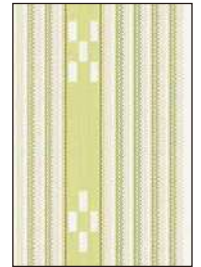
WO4/201
(ハーリーグリーン)



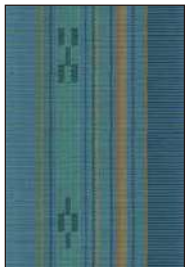
WO4/208
(ハーリーピンク)



WO4/210
(ハーリーベージュ)



WO4/2201
(スザナグリーン)



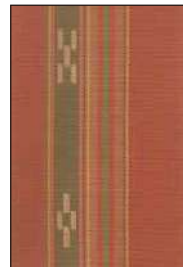
WO4/1230
(リップ)



WO4/177
(赤茶グリーン)



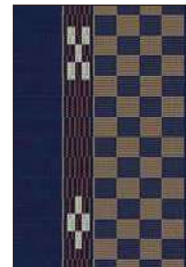
WO4/1031
(クロトン)



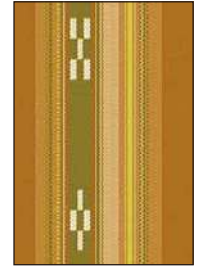
WO4/1210
(イラカ)



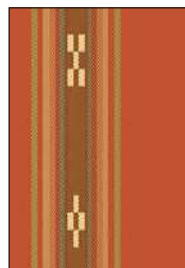
WO4/2205
(うりぶん黒)



WO4/2203
(藍ヒチガアラ)



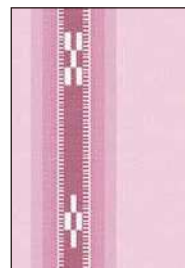
WO4/2204
(ほかし筋茶)



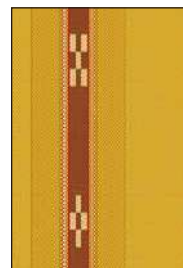
WO4/2409
(茜色)



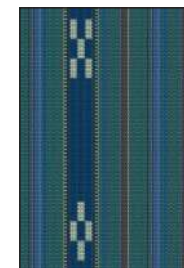
WO4/2410
(花紺)



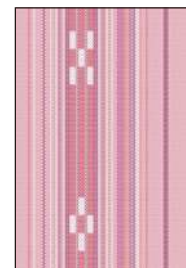
WO4/2202
(桜色)



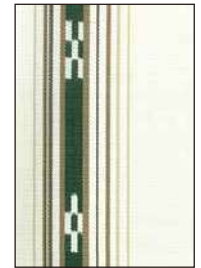
WO4/2412
(深黄)



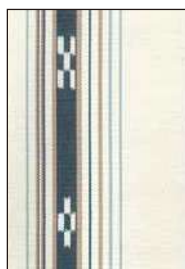
WO4/2803
(イノ)



WO4/H 2903
(桃花色)



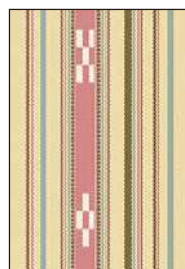
WO4/1008
(ヤタラ白グリーン)



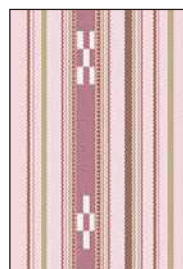
WO4/1009
(ヤタラ白紺)



WO4/602
(ヤタラ月桃ムリブシ)



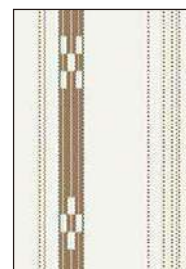
WO4/2305
(ベージュヤタラ縞)



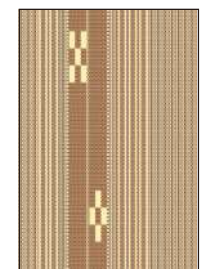
WO4/2307
(紅梅ヤタラ縞)



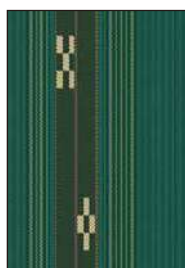
WO4/2306
(薄グリーンヤタラ縞)



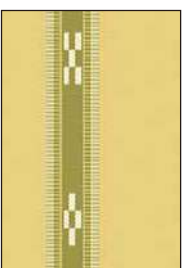
WO4/2411
(白砂浜)



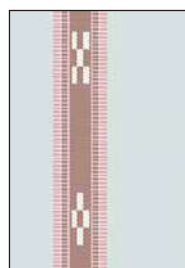
WO4/H 2902
(2本緋・丁字茶)



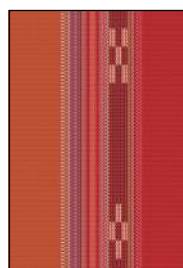
WO4/2514
(2本緋・深青緑)



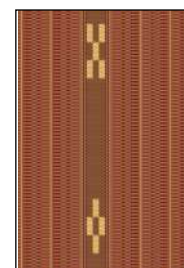
WO4/2417
(2色ヤッサミベージュ)



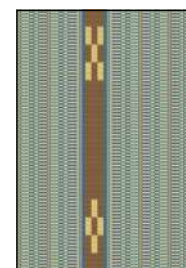
WO4/2418
(2色ヤッサミグレー)



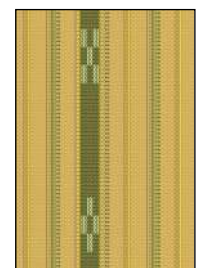
WO4/3001
(こっかーら)



WO4/3002
(人蔘花・深緋)



WO4/3003
(人蔘花・薄千草)



WO4/3004
(クガニ)