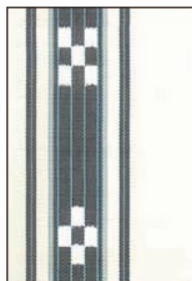


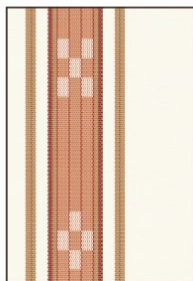
番号 W-3

半巾帯

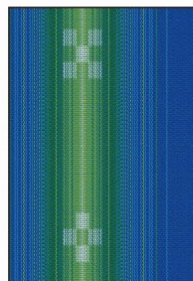
サイズ : 15 × 360 cm



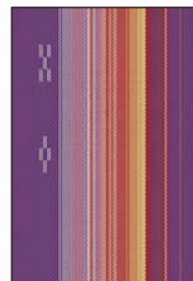
WO4/1002
(白地の紺)



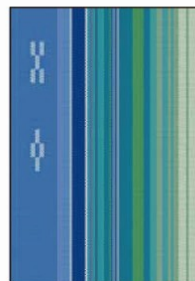
WO4/H2901
(白地薄紅)



WO4/2804
(美らさんご)



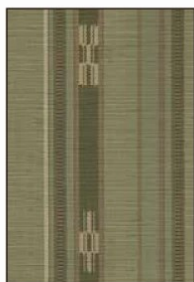
WO4/2506
(太陽綾)



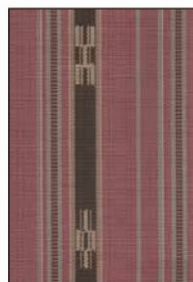
WO4/2416
(ニライカナイ)



WO4/200
(ハーリーブルー)



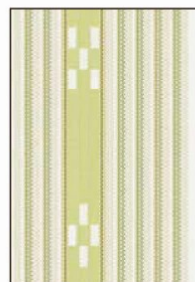
WO4/201
(ハーリーグリーン)



WO4/208
(ハーリーピンク)



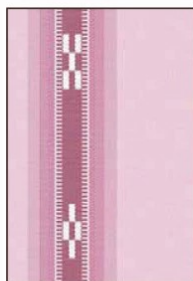
WO4/210
(ハーリーベージュ)



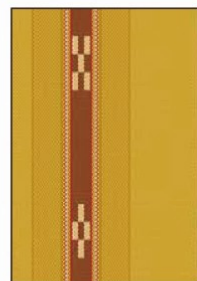
WO4/2201
(スザナツグリーン)



WO4/177
(赤茶グリーン)



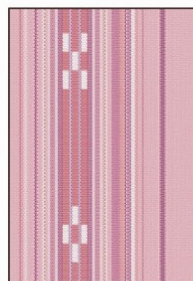
WO4/2202
(桜色)



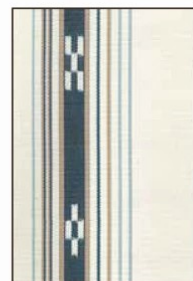
WO4/2412
(深黄)



WO4/2803
(イノ)



WO4/H2903
(桃花色)



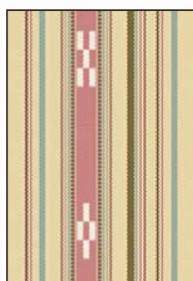
WO4/1009
(ヤタラ白紺)



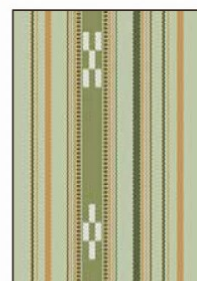
WO4/1008
(ヤタラ白グリーン)



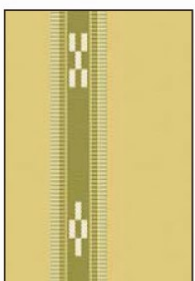
WO4/602
(ヤタラ月桃ムリブシ)



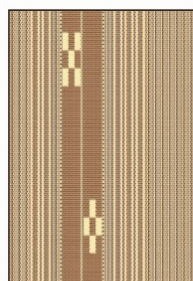
WO4/2305
(ベージュヤタラ縞)



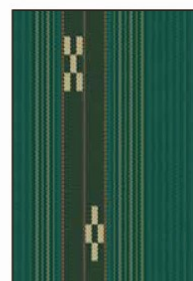
WO4/2306
(薄グリーンヤタラ縞)



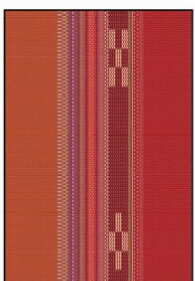
WO4/2417
(2色ヤッサミベージュ)



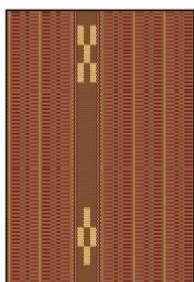
WO4/H2902
(2本紺・丁字茶)



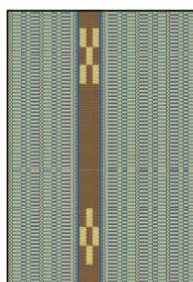
WO4/2514
(2本紺・深青緑)



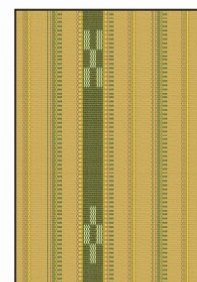
WO4/3001
(こっから)



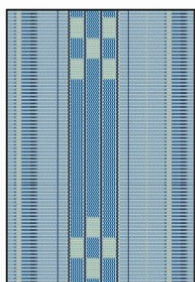
WO4/3002
(人参花・深紺)



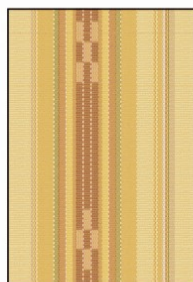
WO4/3003
(人参花・薄千草)



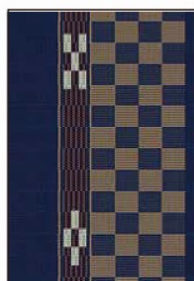
WO4/3004
(クガニ)



WO4/H3101
(縦ヤッサミブルー)



WO4/H3102
(くちなし色)



WO4/2203
(藍ヒチガーラ)